

REVEAL[®] Q+ FOR ZEAREALENONE

DOWNLOAD AND READ KIT INSTRUCTIONS COMPLETELY BEFORE PERFORMING TEST.



Materials Provided:

- 25 Reveal[®] Q+ for Zearalenone test strips
- 25 Red sample dilution cups
- 25 Sample cups
- 01 Bottle of sample diluent

Product Number: 8185

Threshold: 50–1200 ppb

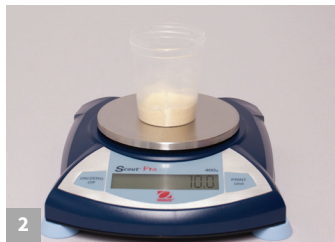
Testing time: 6 minutes

Call 800.234.5333 to order or visit NEOGEN.com

Procedure



1 Prepare by entering the QR code into the AccuScan[®] Gold reader. Select wheat or corn curve.



2 Obtain a representative sample. Grind and weigh out a 10 g sample.



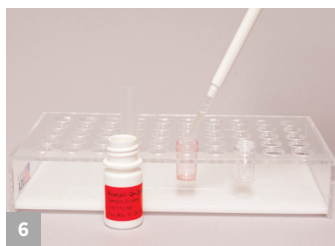
3 Add 30–50 mL of ethanol to the sample depending on the commodity.



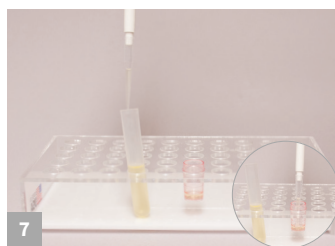
4 Shake vigorously for 3 minutes, or blend for 1 minute.



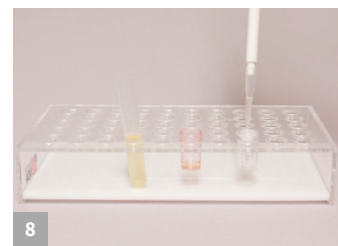
5 Allow to settle, then filter collecting a minimum 3 mL filtrate.



6 Add 200 µL of sample to the red dilution cup.



7 Add 100 µL of the sample extract to the red dilution cup and mix up and down 5 times.



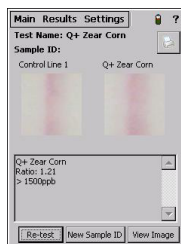
8 Transfer 100 µL to the sample cup.



9 Place a new Reveal Q+ for Zearalenone strip into the sample cup. Set a timer for 6 minutes.



10 Remove promptly at 6 minutes and interpret results using the AccuScan Gold reader.



Results shown on the AccuScan Gold reader. Results greater than 1200 ppb must be diluted and retested.



Call 800.234.5333 to order or visit NEOGEN.com

Reveal[®] Q+ for Zearalenone

Aqueous Extraction

Product Number: 8185

Ordering Information

8185 Reveal Q+
for Zearalenone
AccuScan[®] Gold



Test with Confidence

NEOGEN[®] introduces Reveal[®] Q+ for Zearalenone, an easy-to-use, rapid, quantitative lateral flow test that provides unparalleled accuracy in only six minutes.

Reveal Q+ for Zearalenone is innovative technology which yields accurate and reproducible quantitative results.

- **Simple** ethanol extraction
- **Fast** time to result
- **Easy** to use

Materials Recommended, Not Provided

NEOGEN #	Item Description
9428, 9428B	Sample collection cups with lids 125 mL
9421, 9421B	Sample collection tubes with caps
9420, 9429, 9519	Filter syringes, Whatman #4 filter paper or equivalent
9330	Centrifuge, mini
9172	Micro centrifuge tubes
9448, 9447	Dispensing pump or graduated cylinder
9401, 9453	Agri-grind grinder or equivalent
9427	Scale capable of weighing 5–50 g ± 0.1 g
9426, 9452	Timer
9475	Reveal sample cup rack
9860, 9272	Pipettor, 100 µL
9407, 9410, 9417	Pipette tips 200 µL
9488	Pipettor, 200 µL
—	Distilled or deionized water

