

### PRECAUTIONARY STATEMENTS

#### HAZARDS TO HUMANS AND DOMESTIC ANIMALS

**CAUTION:** Harmful if swallowed or absorbed through the skin. Causes moderate eye irritation. Avoid contact with eyes, skin, or on clothing. Keep away from children, domestic animals and pets.

#### Personal Protective Equipment (PPE):

All handlers (including applicators) must wear long-sleeved shirt, long pants, shoes, socks and water-proof gloves. Any person who retrieves carcasses or unused bait following application of this product must wear waterproof gloves.

#### User Safety Requirements

Follow manufacturer's instructions for cleaning/maintaining PPE. If no such instructions for washables, use detergent and hot water. Keep and wash PPE separately from other laundry. Remove PPE immediately after handling this product. Wash the outside of gloves before removing. As soon as possible, wash hands thoroughly after applying the bait and before eating, drinking, chewing gum, using tobacco or using the toilet and change into clean clothing.

#### ENVIRONMENTAL HAZARDS

This product is extremely toxic to mammals, birds and other wildlife. Dogs, cats and scavenging mammals and birds might be poisoned if they feed upon animals that have eaten this bait. Do not apply directly to water, or to areas where surface water is present or to intertidal areas below the mean high water mark. Do not allow bait to be exposed on soil surface. Do not apply where runoff is likely to occur. Do not contaminate water when disposing of equipment wash water or rinsate.

### DIRECTIONS FOR USE

It is a violation of Federal law to use this product in a manner inconsistent with its labeling.

**READ THIS LABEL:** Read this entire label and follow all use directions and use precautions. Use only for the sites, pests, and application methods described on this label.

**IMPORTANT:** Do not expose children, pets or other non-target animals to rodenticides. To help to prevent accidents:

1. Store product not in use in a location out of reach of children and pets.
2. Apply bait in locations out of reach of children, pets, domestic animals and non-target wildlife, or in tamper-resistant bait stations. These stations must be resistant to destruction by dogs and by children under six years of age, and must be used in a manner that prevents such children from reaching into bait compartments and obtaining bait. If bait can be shaken from stations when they are lifted, units must be secured or otherwise immobilized. Even stronger bait stations are needed in areas open to hoofed livestock, raccoons, bears, or other potentially destructive animals, or in areas prone to vandalism.
3. Dispose of product container, and unused, spoiled, and unconsumed bait as specified on this label.

**Note:** Bait stations are mandatory for outdoor, above-ground use. Tamper-resistant bait stations must be used if children, pets, non-target mammals, or birds may access the bait.

#### USE RESTRICTIONS:

##### In and Around Buildings and Structures

This product can only be used to control the following rodent pests in and around man-made structures: House mouse (*Mus musculus*), Norway rat (*Rattus norvegicus*), Roof rat (*Rattus rattus*), Cotton rats\* (*Sigmodon hispidus*), Eastern harvest mouse\* (*Reithrodontomys humuli*), Golden mouse\* (*Ochrotomys nuttalli*), Polynesian rat\* (*Rattus exulans*), and Meadow vole\* (*Microtus pennsylvanicus*). This product must be used in and within 100 feet of agricultural buildings and man-made structures constructed in a manner so as to be vulnerable to commensal rodent invasions and/or to harboring or attracting rodent infestations. Fence and perimeter baiting, beyond 100 feet from an agricultural structure as defined above, is prohibited. This product must not be applied directly to food or feed crops.

**\*Not permitted for use against the following species in California: Cotton rat, Eastern harvest mouse, Golden mouse, Polynesian rat, Meadow vole.**

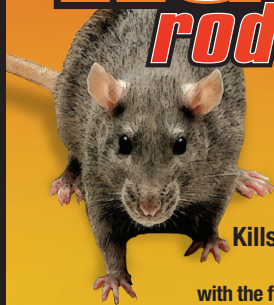
##### Inside Burrows

This product may only be applied to active burrows to control Norway rats and roof rats within 100 feet of buildings and man-made structures constructed in a manner so as to be vulnerable to commensal rodent invasions and/or to harboring or attracting rodent infestations provided that infestations of these rodents have been confirmed. Efforts should be made to remove food trash, garbage, clutter, and debris.

Bait must be placed no less than 6 inches into active Norway/roof rat burrows.

# Havoc<sup>®</sup>

## rodenticide bait



### KILLS RATS AND MICE

#### Kills Warfarin-Resistant Norway Rats and House Mice.

Rodents may consume a lethal dose in a single-night's feeding, with the first dead rodents appearing four or five days after feeding begins.

This product may only be used inside and within 100 feet of agricultural buildings or inside of transport vehicles (ships, trains, or aircraft).

This Product May Not Be Sold in Packaging that Holds Less Than 8 Pounds of Bait.

#### ACTIVE INGREDIENT:

Brodifacoum  
3-[3-(4-bromo-[1,1'-biphenyl]-4-yl)-1,2,3,4-tetrahydro-1-naphthalenyl]-4-hydroxy-2H-1-benzopyran-2-one..... 0.005%

OTHER INGREDIENTS:..... 99.995%

TOTAL:..... 100.000%

EPA Reg. No. 61282-28

EPA Est. No. 61282-WI-01

## KEEP OUT OF REACH OF CHILDREN CAUTION

FIRST AID HAVE LABEL WHEN OBTAINING TREATMENT ADVICE	
<b>If Swallowed:</b>	<ul style="list-style-type: none"> <li>• Call a poison control center, doctor, or 1-800-498-5743 immediately for treatment advice.</li> <li>• Have person sip a glass of water if able to swallow.</li> <li>• Do not induce vomiting unless told to do so by the poison control center or doctor.</li> </ul>
<b>If on Skin or on Clothing:</b>	<ul style="list-style-type: none"> <li>• Take off contaminated clothing.</li> <li>• Rinse skin immediately with plenty of water for 15-20 minutes.</li> <li>• Call a poison control center, or doctor, or 1-800-498-5743 immediately for treatment advice.</li> </ul>
<b>If in Eyes:</b>	<ul style="list-style-type: none"> <li>• Hold eye open and rinse slowly and gently with water for 15-20 minutes.</li> <li>• Remove contact lenses, if present, after the first 5 minutes, then continue rinsing eye.</li> <li>• Call a poison control center, or doctor, or 1-800-498-5743 immediately for treatment advice.</li> </ul>
<b>NOTE TO PHYSICIAN</b>	
If swallowed, this material may reduce the clotting ability of the blood and cause bleeding. If ingested, administer Vitamin K <sub>1</sub> intramuscularly or orally. Vitamin K <sub>1</sub> is antidotal at doses of 10-20mg (not mg/kg). Repeat as necessary based on monitoring of prothrombin times.	
<b>TREATMENT FOR PET POISONING</b>	
If animal eats bait, call veterinarian or 1-800-498-5743 at once.	
<b>NOTE TO VETERINARIAN</b>	
<b>Anticoagulant Brodifacoum:</b> For animals ingesting bait and/or showing poisoning signs (bleeding or elevated prothrombin times), give Vitamin K <sub>1</sub> at doses of 2-5 mg/kg. If needed, check prothrombin times every 3 days until values return to normal (up to 30 days). In severe cases, blood transfusions may be necessary.	
For 24-hour emergency information on this product, call 1-800-498-5743 (US & Canada) or 1-651-523-0318 (all other areas).	

NET CONTENT: 25 lbs

NET WEIGHT: 25 pounds



Do not broadcast bait.

Do not place near or inside ventilation duct openings. Do not contaminate water, food, feedstuffs, food or feed handling equipment, or milk or meat handling equipment or surfaces that come into direct contact with food. When used in USDA inspected facilities, this product must be applied in tamper-resistant bait stations. Do not use this product in sewers.

Do not sell this product in individual containers holding less than 8 pounds of bait.

**SELECTION OF TREATMENT AREAS:** Determine areas where rats or house mice will most likely find and consume the bait. Generally, these areas are along walls, by gnawed openings, in or beside burrows, in corners and concealed places, between floors and walls, or in locations where rodents or their signs have been seen. Protect bait from rain or snow. Remove as much alternative food as possible.

### APPLICATION DIRECTIONS

#### RATS:

Place 4 to 16 ounces of bait per placement. Space placements at intervals of 15 to 30 feet in infested areas. Maintain an uninterrupted supply of fresh bait for at least 10 days or until there no longer are signs of new feeding by rats.

#### MICE:

Place ¼ to ½ ounces (1-2 level tablespoons) of bait at each placement location. Space placements at 8- to 12-foot intervals. Larger placements (up to 2 ounces) may be needed at points of very high house mouse activity. Maintain an uninterrupted supply of fresh bait for at least 15 days or until there are no longer signs of new feeding by house mice.

#### FOLLOW-UP:

Replace contaminated or spoiled bait immediately. Using waterproof gloves collect and dispose of all dead, exposed animals and leftover bait properly. To discourage reinfestation, limit sources of rodent food, water and harborage as much as possible. If reinfestation does occur, repeat treatment. Where a continuous source of infestation is present, establish permanent bait stations and replenish as needed.

### STORAGE AND DISPOSAL

Do not contaminate water, food or feed by storage or disposal.

**Pesticide Storage:** Store in original container in a cool, dry place inaccessible to children and pets. Keep containers closed and away from other chemicals.

**Pesticide Disposal:** Dispose of wastes resulting from the use of this product in trash or at an approved waste disposal facility.

**Container Handling:** Nonrefillable container. Do not reuse or refill this container.

**Plastic Containers:** Triple rinse (or equivalent) then offer for recycling or reconditioning; or puncture and dispose of in a sanitary landfill, or incineration.

**Paper Containers:** Dispose of empty container by placing in trash, at an approved waste disposal facility or by incineration.

### DISCLAIMER

**DISCLAIMER:** To the extent permitted by applicable law, seller makes no representation or warranty, either expressed or implied, for results due to misuse, improper handling or improper storage of this material. Nor does Seller assume any responsibility for injury to persons, crops, animals, soil or property arising out of misuse, improper handling or improper storage of this material.

For non-emergency (e.g., current product information), Call: 1-800-621-8829

Havoc<sup>®</sup> is a registered trademark of a Syngenta Group Company.

**\*Not permitted for use against the following species in California: Cotton rat, Eastern harvest mouse, Golden mouse, Polynesian rat, Meadow vole.**

Item No. 116395

Manufactured By:  
HACCO, Inc.  
110 Hopkins Drive  
Randolph, WI 53956  
220375-1218

