

REVEAL[®] 3-D FOR ALMOND

PLEASE READ KIT INSTRUCTIONS COMPLETELY BEFORE PERFORMING TEST.



Materials provided:

- 10 yellow test devices
- 10 sample tubes and caps
- 10 sachets of Type 12 extraction buffer
- 10 sterile swabs
- 1 bottle swab wetting solution

Product number: 902086G

Rinse/Food: 5 ppm almond

Swab: 3–4 µg/100 cm² almond

Testing time: 5 minutes

Call 800.234.5333 to order or visit NEOGEN.com

Materials required but not provided (for food extraction only):

- 8504 3-D Food Buffer
- 9381 50 mL graduated tubes

Rinse Sampling



1 Open Type 12 extraction buffer sachet and add to a sample tube.



2 Add 0.25 mL of sample to the sample tube.

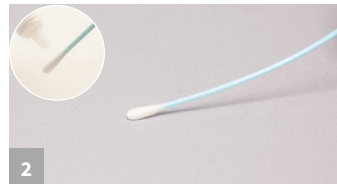


3 Secure cap and shake for 1 minute. Proceed to Rinse/Swab Testing step #1

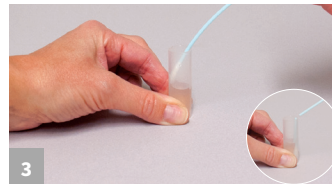
Swab Sampling



1 Open Type 12 extraction buffer sachet and add to a sample tube.



2 Gather the sample. For dry surfaces moisten with swab wetting solution. Do not premoisten for wet surfaces.



3 Return the swab to the extraction buffer and break off into the tube.



4 Secure cap and shake for 1 minute. Proceed to Rinse/Swab Testing Step #1

Rinse/Swab Testing



1 Remove the lid and fill with liquid from the tube.



2 Dip the Reveal 3-D device into the liquid within the lid, ensuring the liquid saturates the cavity.



3 When the liquid is seen running up the test window, place the device on a flat surface. Allow the test to develop for 5 minutes.



4 Interpret the results.

Food Sample Extraction & Testing



1 Add 20 mL of Reveal 3-D Food Buffer into 50 mL tube. (18 mL of buffer for liquid samples)



2 Add 2 g (2 mL for liquid samples) of sample to tube



3 Secure cap and shake for 1 minute.



4 With the tube tilted at approximately a 45 degree angle, dip the device into the tube; ensure that the cavity is saturated with the liquid. Move to steps 3–4 of previous section.



Call 800.234.5333 to order or visit NEOGEN.com

Reveal[®] 3-D for Almond Allergen

Product Number: 902086G

Reveal[®] 3-D for Almond is a simple, quick, and sensitive lateral flow test capable of detecting almond residue in clean-in-place rinses, and almond residue from environmental swabs. In addition, Reveal 3-D Almond now offers an extraction method for testing food products and ingredients. This method is universal across all product types, is simple to follow, and gives rapid results.

The unique hand-held device with 3-line readout uses a control line to confirm the method has been performed successfully, and two further lines to differentiate between no detectable amount, low and high levels of detection.

Features:

- 5 minute test time to result
- 1 minute extraction for food samples
- 10 tests per kit

Fully Validated

Reveal 3-D for Almond Allergen has undergone a rigorous validation process, investigating the sensitivity, specificity, cross-reactivity and robustness of the assay. Contact your NEOGEN representative for a copy of the validation report.

