

Reveal for Total Milk Procedure

Note: Please read kit instructions completely before performing test.
Questions? Call 800/234-5333 or 517/372-9200.

Liquid/CIP Extraction



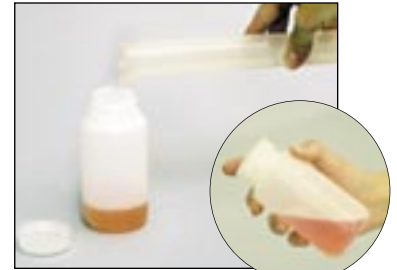
1. Prepare 1 foil pouch of extraction additive in 1 L distilled or deionized water and heat to 60° C.



2. Transfer 10 mL of liquid sample to a new bottle.



3. Add one level scoop of milk extraction additive.



4. Pour 90 mL of 60° C extraction solution, cap and shake vigorously for 3 minutes.

Environmental Swab Extraction



1. Prepare 1 foil pouch of extraction additive in 1 L distilled or deionized water and heat to 60° C.



2. Prepare working solution by mixing 125 mL preheated extraction solution, and one level scoop extraction additive to a clean bottle.



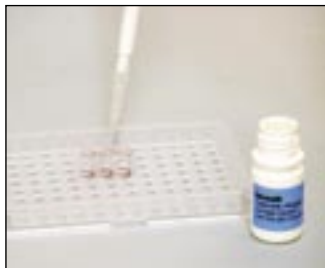
3. Gather the sample.
For dry surfaces moisten with extraction solution. Do not premoisten for wet surfaces.



4. Add 5 mL working solution to tube and shake for 2 minutes to mix, or vortex for 30 seconds.



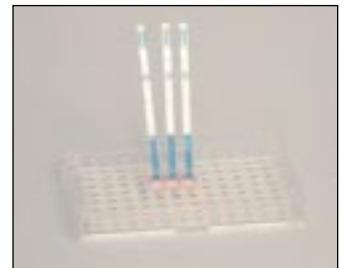
5. Remove one reagent well for each sample being tested and place in a well holder.



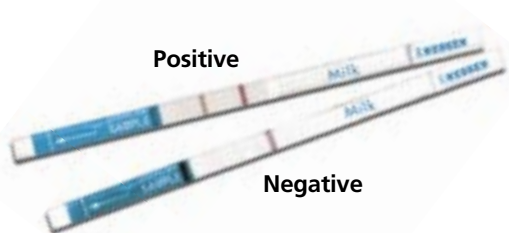
6. Add 100 μ L sample diluent to each well and swirl to mix.



7. Add 100 μ L sample extract to appropriate well, and mix up and down 3 times.



8. Insert a milk test strip and allow test to develop for 5 minutes.



9. Visually interpret test results.

#8478 Reveal for Total Milk

Threshold: 5 ppm
Testing time: 5 minutes
Tests per packet: 24

Prod.# **Product description**
 8478 Reveal for Total Milk Allergen
 8429 Allergen Extraction Kit
 8432S Allergen Environmental Swabbing Kit



Sales & Service: 800/234-5333 (USA/Canada) or 517/372-9200
 Fax: 517/372-2006 • www.neogen.com