

# REVEAL® MULTI-TREENUT

PLEASE READ KIT INSTRUCTIONS COMPLETELY BEFORE PERFORMING TEST.



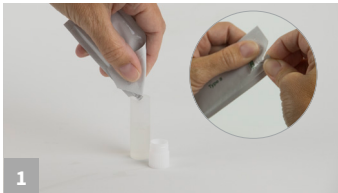
## Materials provided:

- 10 test devices
- 10 sample tubes and caps
- 10 sachets of extraction buffer
- 10 sterile swabs

Product number: 8555 (Multi-Treenut)

Call 800.234.5333 to order or visit [NEOGEN.com](http://NEOGEN.com)

## Extraction: Rinses



Open the appropriate extraction buffer sachet and fold corner to create a funnel. Add to a sample tube.

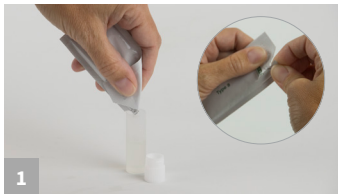


Add 1 mL of sample to the sample tube.

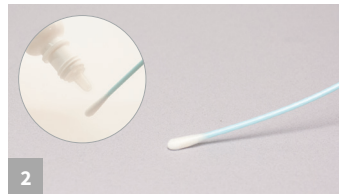


Secure cap and shake sample for 1 minute.

## Extraction: Swabs



Open appropriate extraction buffer sachet and fold corner to create a funnel. Add to a sample tube.



Gather the sample. For dry surfaces moisten with swab wetting solution. Do not premoisten for wet surfaces.



Return the swab to the extraction buffer and break off into the tube.



Secure cap and shake sample for 1 minute.

## Sample Testing



Remove the lid and fill with liquid from the tube.



Dip the device into the liquid in the lid; ensure that the cavity is saturated with liquid.



Leave the cavity saturated until the liquid is seen running into the test window.



Place the device on a flat surface and allow the test to develop for 10 minutes.



Interpret the results.

