

m-E. COLI/COLIFORM BROTH

PLEASE READ INSTRUCTIONS COMPLETELY BEFORE PERFORMING TEST.



Product summary

Ampoule m-*E. coli*/Coliform Broth, 2 mL is a ready-to-use medium for use with NEOGEN filters when testing for Total Coliforms and *E. coli*. This chromogenic membrane filter medium is sensitive and differential for the concurrent detection and enumeration of Coliforms and *E. coli* in water samples within 24 hours. *E. coli* colonies appear dark blue, and Coliform colonies appear pink to purplish pink, making each easily distinguishable by visual inspection.

Product number: 6511

Call 800.234.5333 to order or visit NEOGEN.com

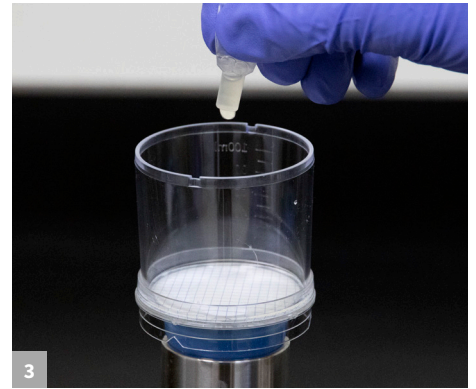
Test procedure



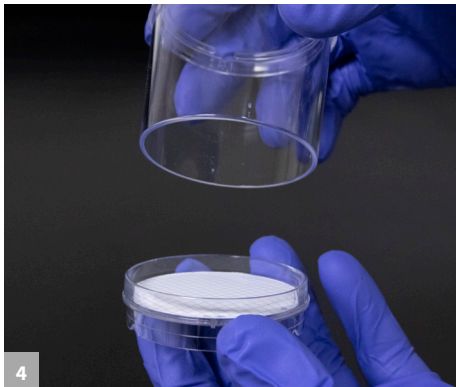
1 Remove filter unit cover and carefully pour sample onto the filter.



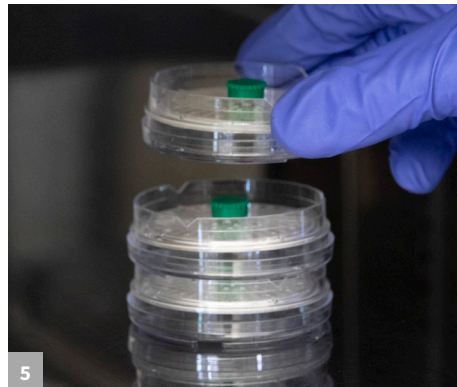
2 Apply vacuum to pull sample through the filter. Note: Be sure that pressure is released before proceeding.



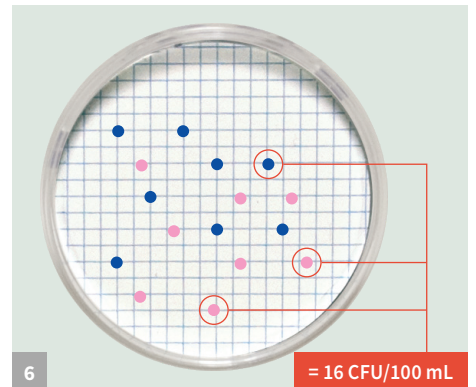
3 Distribute the contents of one m-*E. coli*/coliform Broth ampoule onto the filter surface. Carefully apply light vacuum pressure to pull the medium into the filter.



4 Collapse the filter unit to a petri dish, remove the unit from the manifold and place a plug on the bottom port.



5 Invert the filter dish and incubate at $36 \pm 2^\circ\text{C}$ for 21–24 hours.



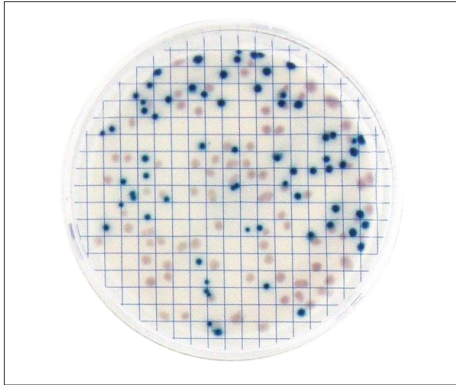
6 After incubation, read and record results. All dark blue colonies should be counted as *E. coli* and all pink to purplish pink colonies should be counted as coliforms.

= 16 CFU/100 mL

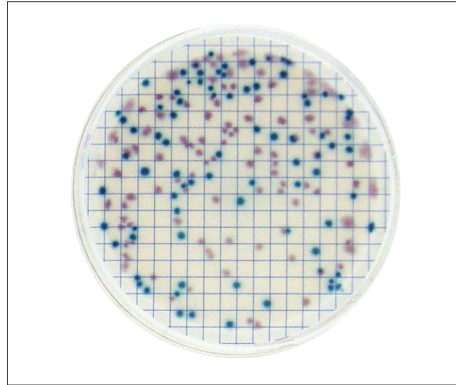
m-E. COLI/COLIFORM BROTH

PLEASE READ INSTRUCTIONS COMPLETELY BEFORE PERFORMING TEST.

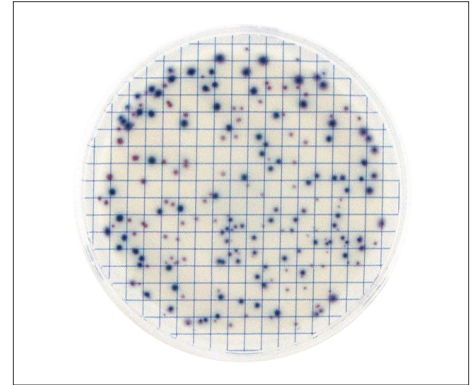
Interpretation of results



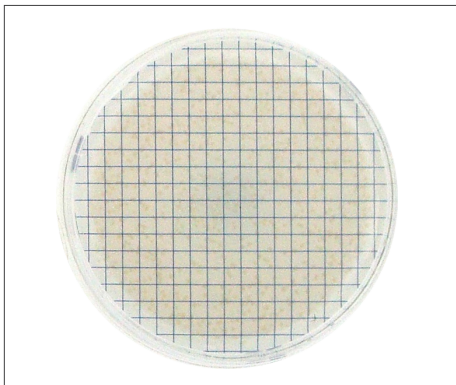
E. coli ATCC 11229: Dark Blue
E. aerogenes ATCC 13048: Pink



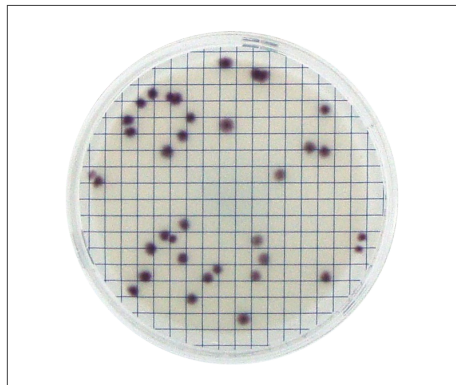
E. coli ATCC 8739: Dark Blue
C. freundii ATCC 8090: Pink



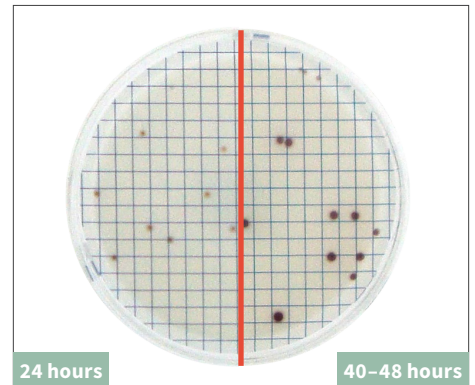
E. coli ATCC 25922: Dark Blue
K. pneumoniae ATCC 13883: Pink



P. aeruginosa ATCC 27853: Beige to yellow



C. freundii ATCC 43864: Purplish-pink



24 hours

40-48 hours

A. hydrophila ATCC 7966
Beige at 24 hours
Dark red at 40-48 hours

Note:

Some organisms may experience a delayed color development and require incubation up to 24 hours.

Some non-target species may develop a reddish color if incubated beyond 24 hours (see *A. hydrophila*); this color is not indicative of a coliform.

