

Rodent Cleanout Guide for Poultry Producers



Table of Contents

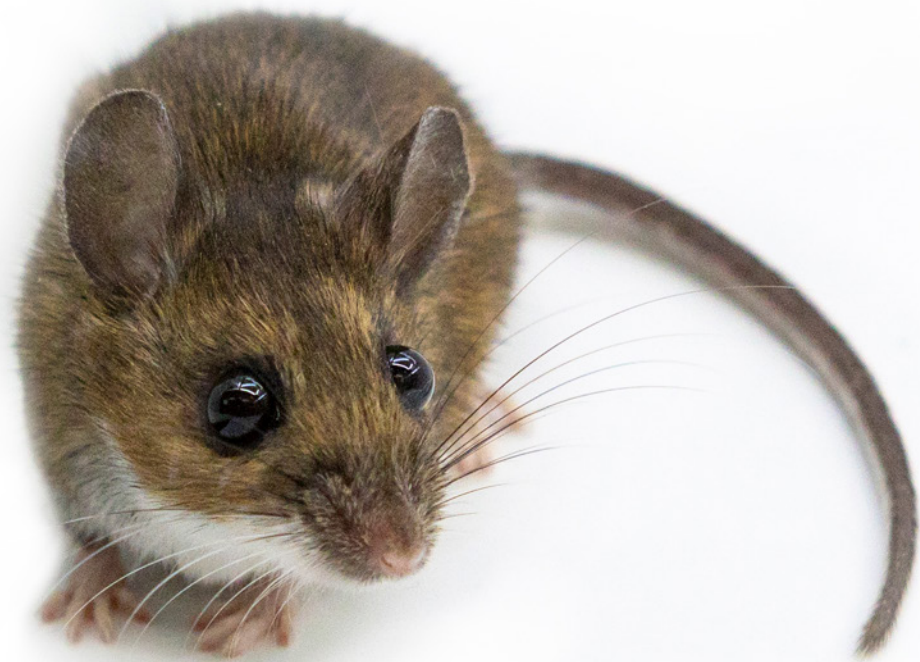
Introduction 2

Preparation Steps 3

Recommended Baiting Steps

- Outside 4
- Inside Empty Buildings..... 5
- Closed-in Attic Space 6

Preparing for Restocking After Cleanout Process 7







Rodent Control Procedures for Poultry Farm Clean Out Sites

The following recommendations are for the control of mice, Norway rats and roof rats in and around poultry facilities during the bird cleanout phase of production. These are recommendations that will suit most operations, however some facilities may benefit from adjustments to this. For example if you are experiencing a particularly high rodent infestation. It's always best to keep in frequent contact with our experts to make sure you're on the right plan.

Preparation Steps

You will need the following in addition to personal protective equipment:

- Bait stations, enough to place every 8–30 feet around the buildings
- Box lids, enough to place every 50 feet on the slats or against the sidewall of buildings

Depending on the season or your physical space, you will need these corresponding NEOGEN rodenticide products*. Always read label directions and indications prior to use. Your NEOGEN representative can help you to select the right products for your facility.

- Prozap® Zinc Phosphide Pellets
- Havoc® Rodenticide Bait (Meal Bait)
- CyKill™ Rodenticide Bait (Meal Bait)
- CyKill Blocks
- CyKill Place Packs
- DeciMax® Blocks
- DeciMax Soft Bait
- Havoc Attack Blocks or Havoc XT Blok



NEOGEN Rodenticide Products				
Item Number	Description	Form	Size	Active Ingredient
114600	Prozap Zinc Phosphide Rodent Pellets AG	Pellets	12 lb Pail	Zinc Phosphide
116395	Havoc Meal Bait	Meal Bait	25 lb Bag	Brodifacoum
116398	Havoc Meal Bait	Meal Bait	25 lb Pail	Brodifacoum
116396	Havoc Meal Bait	Meal Bait	50 lb Bag	Brodifacoum
116393	Havoc Attack	Blocks	10 lb Pail	Brodifacoum
116394	Havoc Attack	Blocks	20 lb Pail	Brodifacoum
116362	Havoc XT Blok	Blocks	8 lb Pouch	Brodifacoum
116361	Havoc XT Blok	Blocks	10 lb Pail	Brodifacoum
116369	Havoc XT Blok	Blocks	20 lb Pail	Brodifacoum
112840	CyKill Rodenticide Bait	Bait	4 lb Jug	Bromethalin
112847	CyKill Rodenticide Bait	Bait	12 lb Pail	Bromethalin
112825	CyKill Blocks	Blocks	4 lb Pouch	Bromethalin
112830	CyKill Blocks	Blocks	9 lb Pail	Bromethalin
112837	CyKill Place Packs	Place Packs	4.7 lb Pail	Bromethalin
116850	DeciMax Blocks	Blocks	9 lb Pail	Bromadiolone
116855	DeciMax Blocks	Blocks	18 lb Pail	Bromadiolone
116841	DeciMax Soft Bait	Soft Bait	8 lb Pail	Bromadiolone
116840	DeciMax Soft Bait	Soft Bait	22 lb Pail	Bromadiolone

1. Remove any brush, boards, trash, debris, and other items of harborage in and around all buildings and grounds.
2. Ensure vegetation around the grounds are maintained at a 2–4 inch level of growth.
3. Restrict access immediately following depopulation making sure buildings are as rodent-proof as possible by blocking entry holes around the building and the attic space. Be sure to check areas around incoming feed and water lines, roof soffit areas, and ensure fan shutters are sealed.
4. Leave all equipment down and remove as much feed as possible from the building, so rodents have fewer food source options.
5. Eliminate water sources by cutting off the water supply to each building and raising the water lines.
6. You're ready to put the **Rodent Clean Out Program** into action. This should be implemented the same day (or no later than day 2) following depopulation to assure quick bait acceptance and prevent rodent movement to other buildings.

*Refer to our Rotational Baiting Program on page 7 to learn more.

Recommended Baiting Steps: *Outside*

Bait Station Baiting

Bait stations are mandatory for outdoor, above-ground use. Tamper-resistant bait stations must be used if children, pets, non-target mammals, or birds may have access to the bait placement location. Fence and perimeter baiting beyond 100 feet from an agricultural structure is prohibited. Ask your NEOGEN representative about which bait stations would be best for your operation.

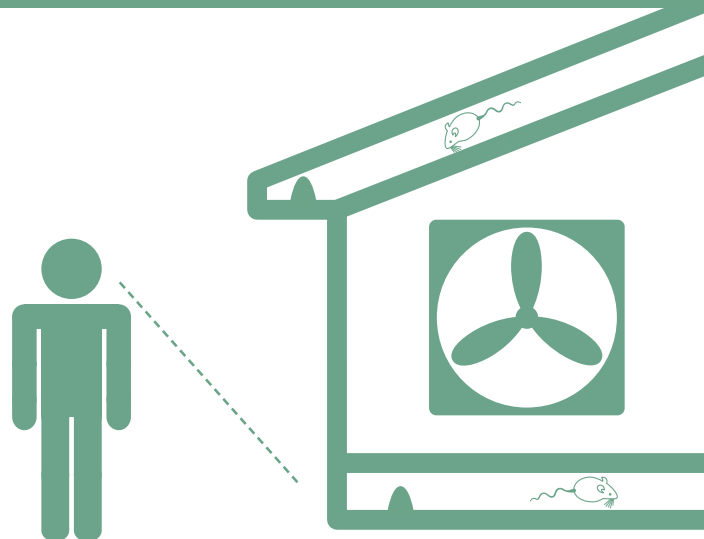
1. Examine the property for areas of high rodent activity and frequent travel.
2. Bait stations should be placed every 15–30 feet for rats and every 8–12 feet for mice around the perimeter of all buildings. Some placements may need to be closer together due to higher rodent traffic in certain areas.
3. Bait all bait stations with **CyKill Blocks**, **DeciMax Blocks**, or **Havoc Attack Blocks**. Please check the product label for accurate baiting recommendations. Check all bait stations within 3–5 days of being baited to determine activity and replace product as needed.
4. Maintain all bait stations by keeping them cleaned out and free of trash, droppings, and nesting debris. Replace all bait products in stations every 30 days to ensure freshness.
5. Bait around all other poultry buildings on the property in the same manner.



Burrow Baiting

1. Examine the property for areas of high rodent activity and frequent travel.
2. Identify all rodent burrows and apply 1–2 teaspoons of **Prozap Zinc Phosphide Rodent Pellets AG** into active burrows. Bait must be placed no less than 6 inches into active Norway/roof rat burrows. Do not broadcast bait.
3. After 3 days, close in all rodent burrows to determine activity.
4. The next day after closing burrows, check for open/active burrows and bait with 4–16 oz of **Havoc Rodenticide Bait (Meal Bait)** or 1–6 oz of **CyKill Rodenticide Bait (Meal Bait)**.
5. Repeat the burrow baiting process every 3–4 days with **Havoc Rodenticide Bait (Meal Bait)** or **CyKill Rodenticide Bait (Meal Bait)**. Maintain an uninterrupted supply of fresh bait for at least 10 days or until there are no longer signs of new feeding by rodents.
6. Rodent burrows should be filled in every three weeks to determine activity. Burrows that have re-opened the next day are considered active. Continue the baiting process until all burrows are no longer active.

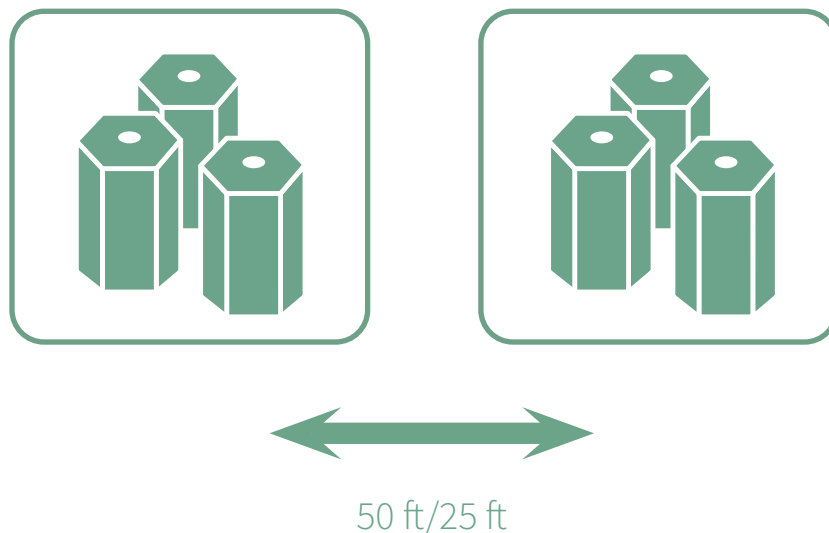
After completing all steps for bait station or burrow baiting, replace contaminated or spoiled bait immediately. Using barrier laminate gloves collect and dispose of all dead, exposed animals and leftover bait properly. To discourage reinfestation, limit sources of rodent food, water and harborage as much as possible. If reinfestation does occur, repeat treatment.



Recommended Baiting Steps: *Inside Empty Buildings*

1. Bait pans, (e.g. paper/cardboard trays) should be placed every 50 feet on the slats or against the sidewall of the building (place one every 25 feet for high population/infestation). Along the end walls, place one bait pan in each corner, one on each side of the end door, one between the end door and corner, and one in the center of the end door.
2. Place product in the center of the bait pans. Contact your NEOGEN sales representative for more details about which products should be used inside empty buildings on your facility.
3. For the first 3–4 days, evaluate the bait pans two times per day. Clean and rebait as necessary keeping products fresh and available. After 3–4 days when activity slows, remove half of the bait pans by eliminating every other one. Combine leftover bait. Continue assessing the pans until activity has stopped. Keep extra bait pans on hand as rodents will chew through the bottom of the cardboard.
4. Ensure that all entry doors are closed and locked while the inside baiting procedures are being implemented.
5. Bait inside all other empty poultry buildings on the property in the same manner.

Bait pans should be placed every 50 feet on slats or against sidewall or every 25 feet for high population.

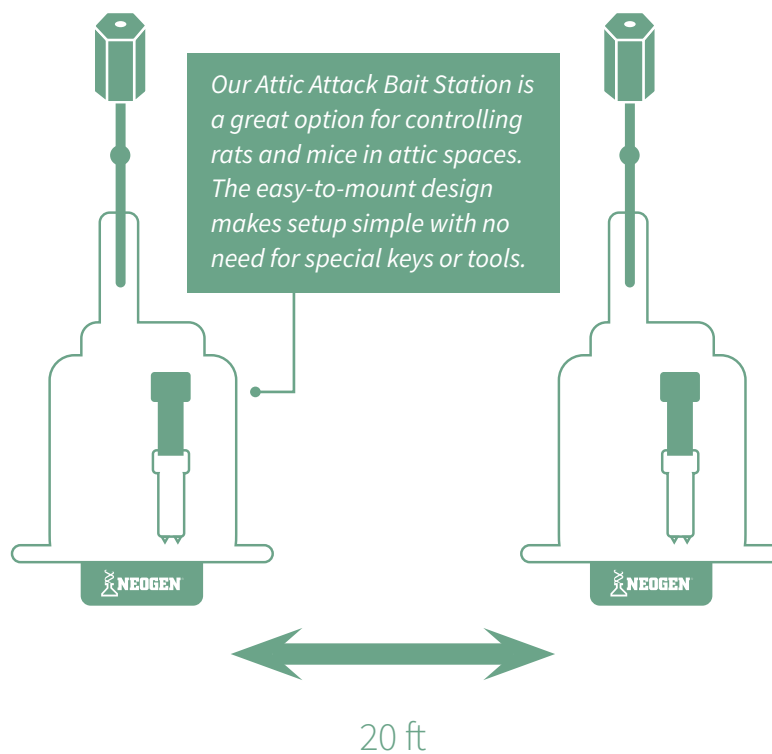


Recommended Baiting Steps: *Closed-in Attic Space*

Attic baiting needs to be done with place pack and/or DeciMax Soft Bait packs during the hot summer months, and a block product during the remaining seasons.

- Evenly place **CyKill Blocks**, **CyKill Place Packs** or **DeciMax Soft Bait** product every 20 feet over the entire span of the attic floor. Please refer to product label for application rates.
- Pay close attention to end walls and piled up insulation.
- This procedure needs to be repeated every 90 days.
- NEOGEN Attic Attack Bait Stations simplify attic baiting with visible indicators when the station is out of bait.

Evenly place bait every 20 feet over the entire span of the attic floor.



Preparing for Restocking After Cleanout Process

General information

- After the Rodent Cleanout is over, clean all outside bait stations and install fresh bait. Clean areas of high traffic to easily detect places to focus.
- Monitor all outside bait products every 1–2 weeks and replace as needed.
- Replace all baits every 30 days to ensure freshness.
- Make sure all inside bait products are removed before new flock entry.
- Always wear waterproof or barrier laminate gloves during every aspect of the above baiting procedures.
- Be consistent. Be disciplined. Repeat at every depopulation.
- Please read and follow all label use directions and precautions.

NEOGEN's Rotational Baiting Program

CyKill

(Bromethalin)

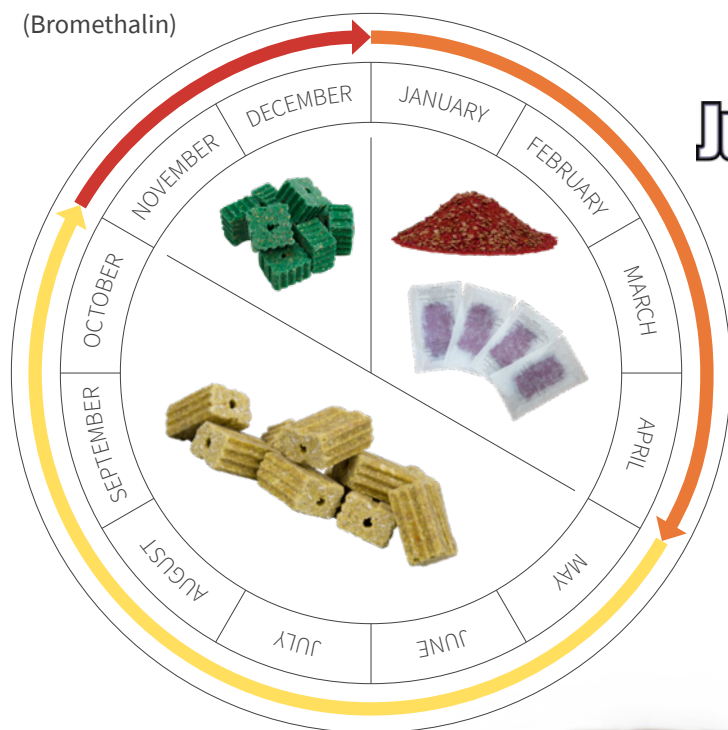
Havoc

(Brodifacoum)

+

Judgement

(Difenacoum)



DeciMax

(Bromadiolone)





